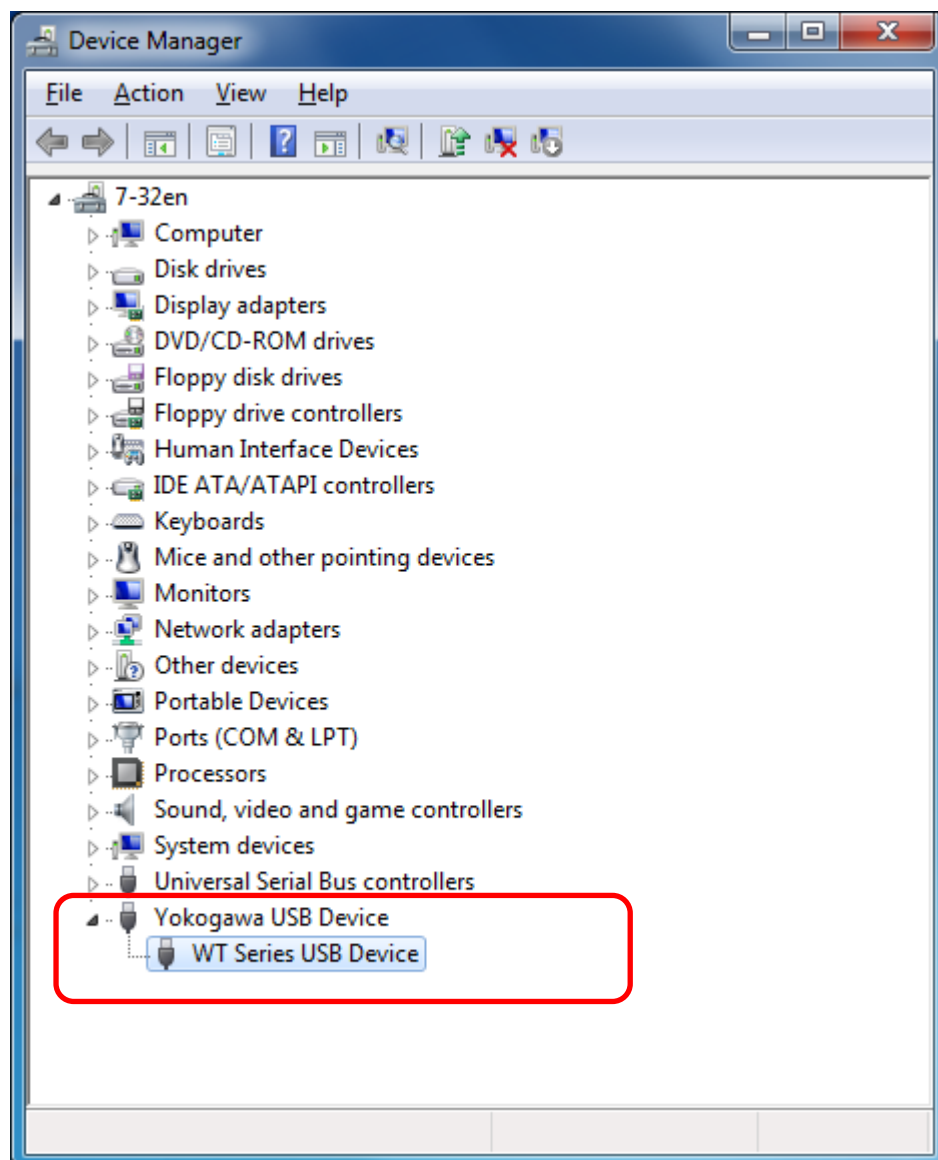
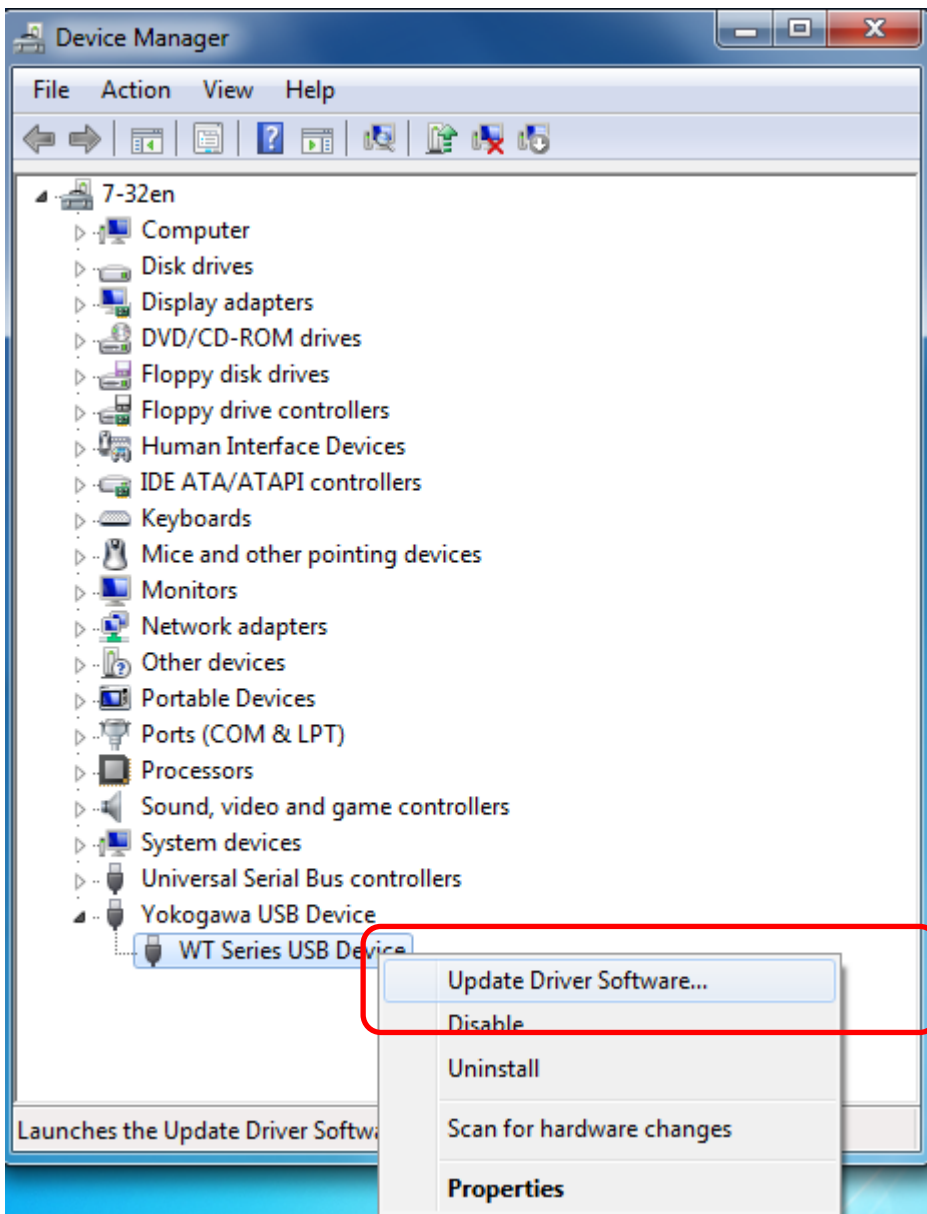


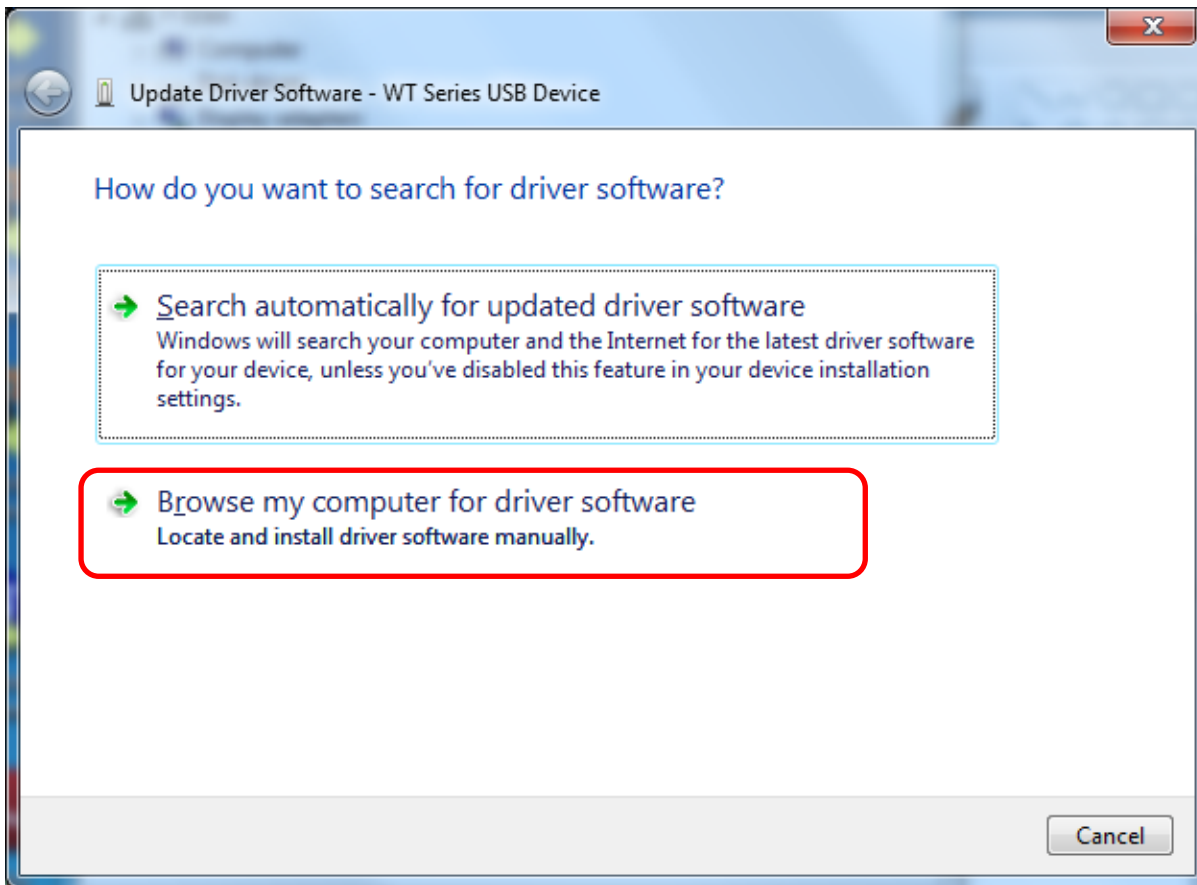
At first, if your WT3000 is shown as Yokogawa USB Device in DeviceManager, this mode can be used for Wtviewer. So if you want to use LabVIEW, you must change the USB driver.



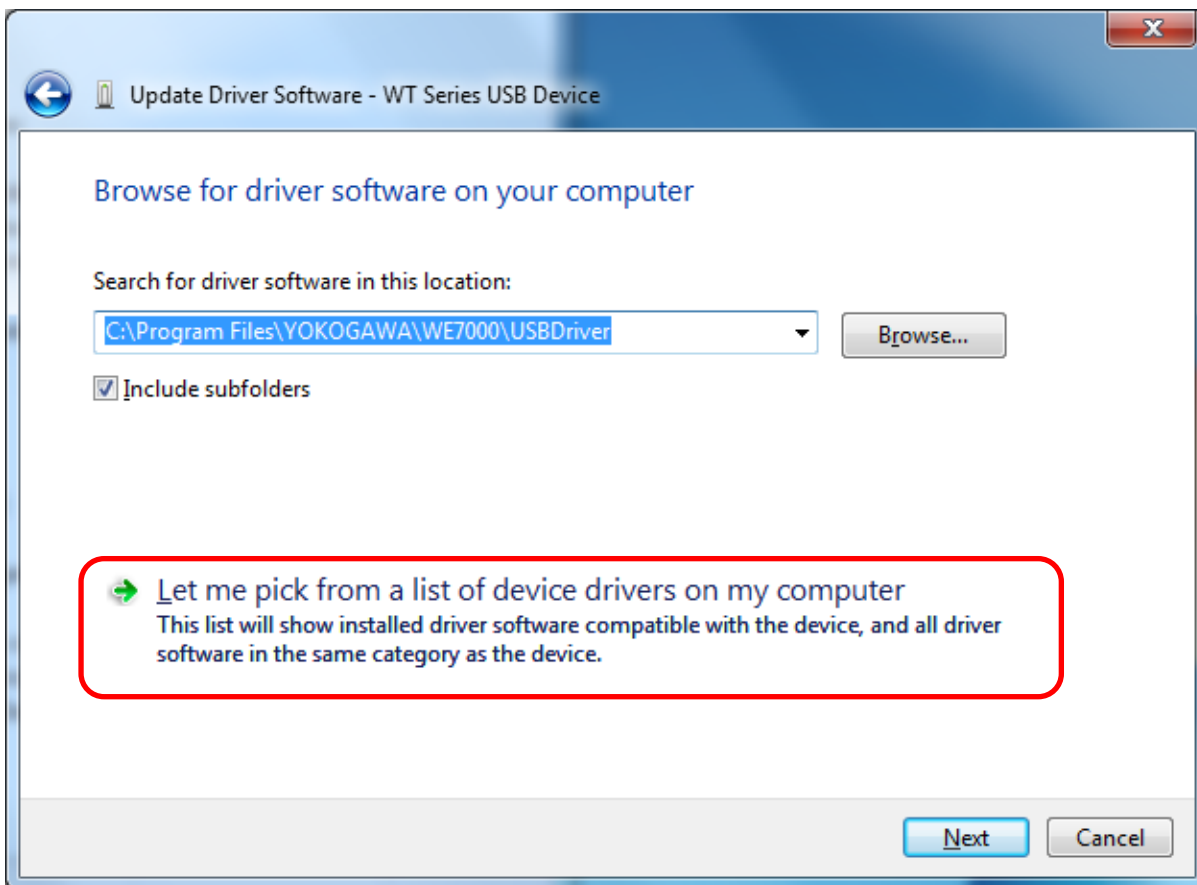
Please right-click on the WT Series USB Device, and select Update Driver Software...



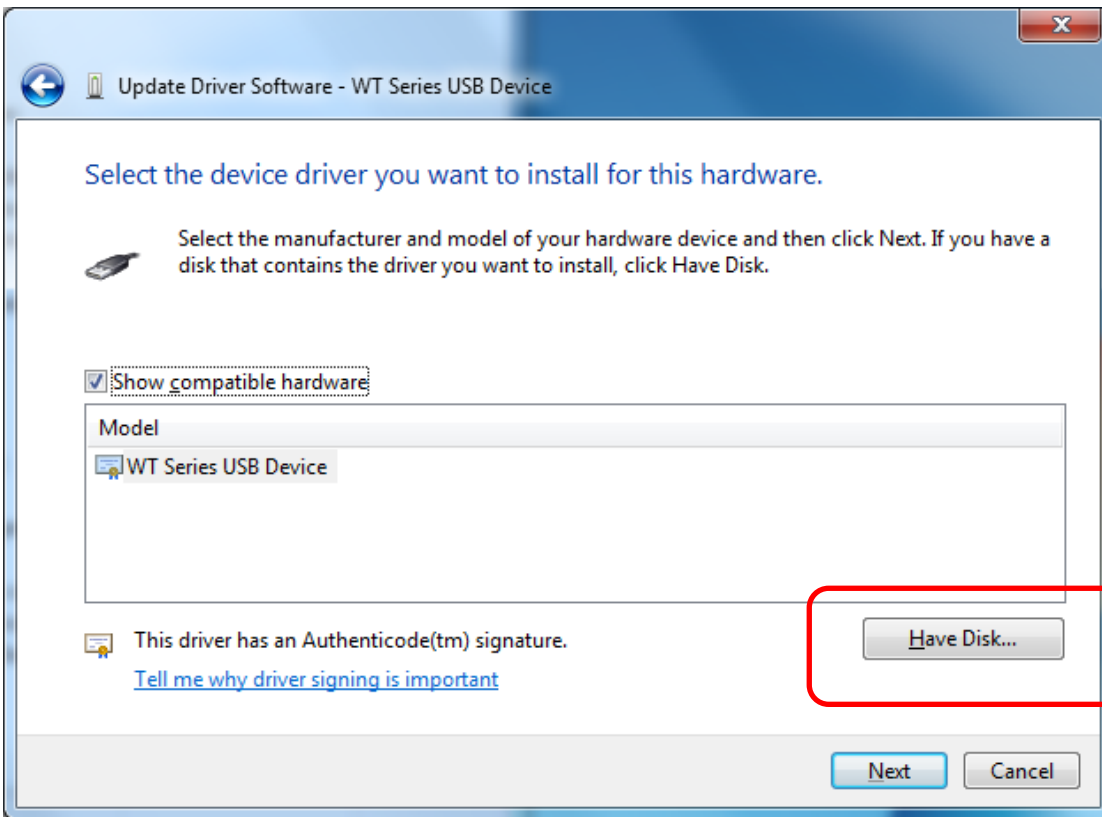
Select Browse my computer driver software.



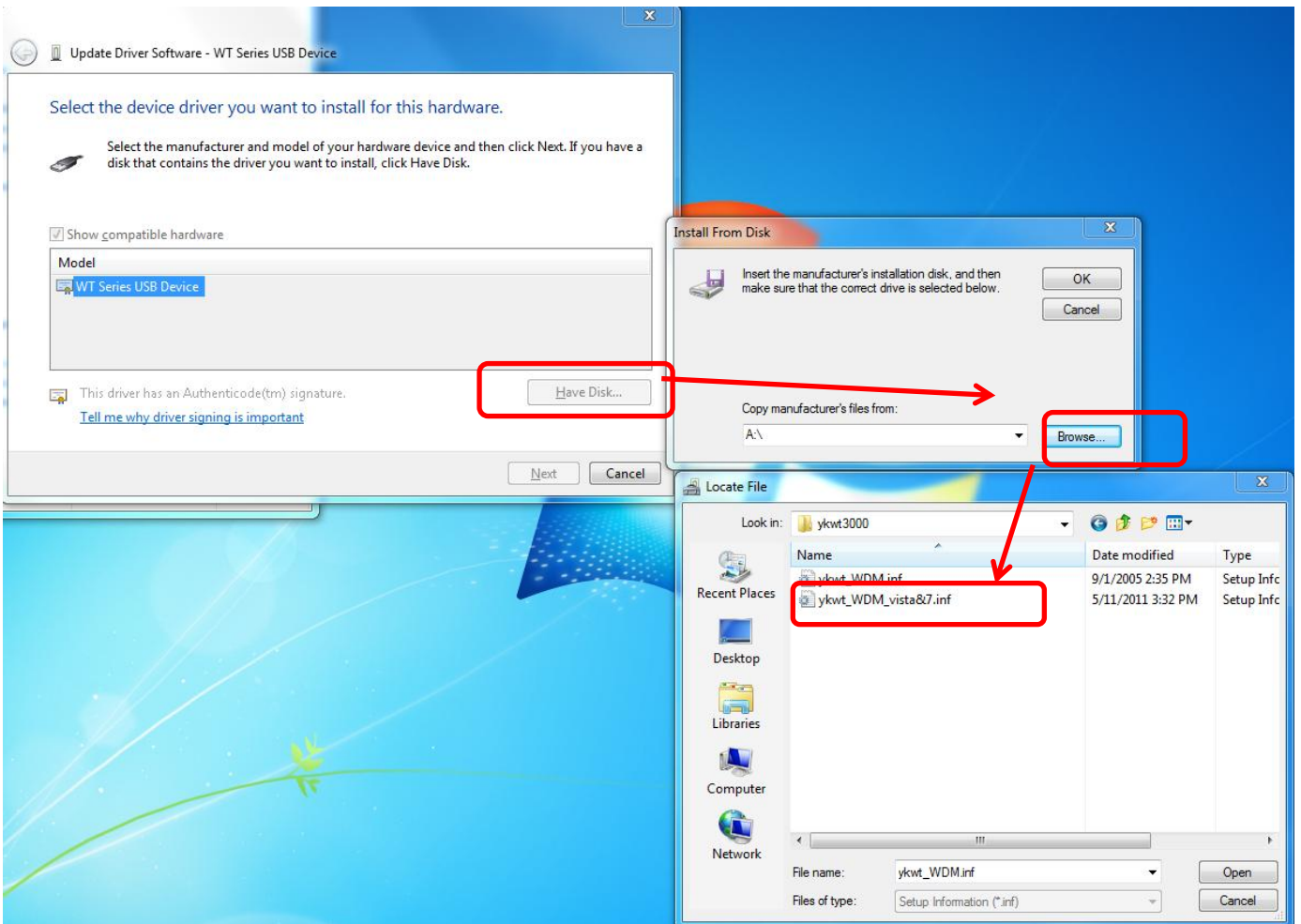
Select Let me pick from a list .....



Select "Have Disk", if there is no WT series Version1.0.0.0..

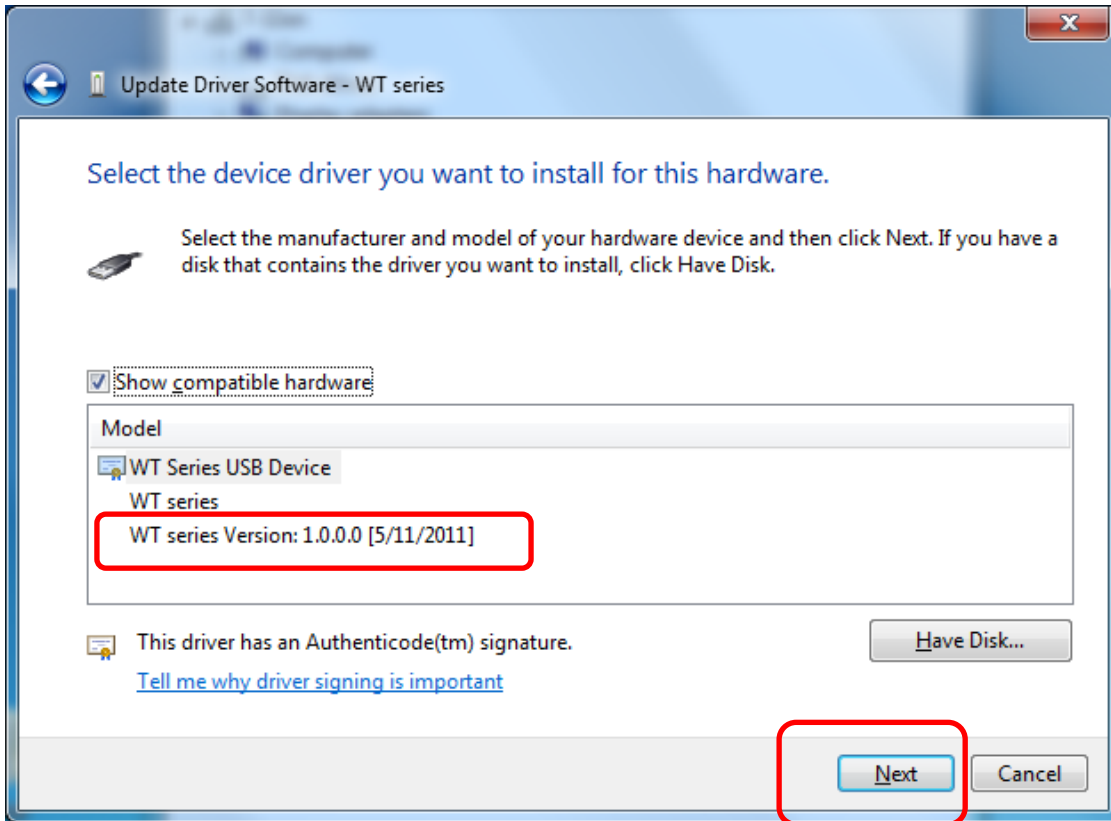


If selected HAVE DISK, please select the ykwt\_WDM\_vista&7.inf in your PC un-zipped from downloaded LabVIEW Instrument Driver.

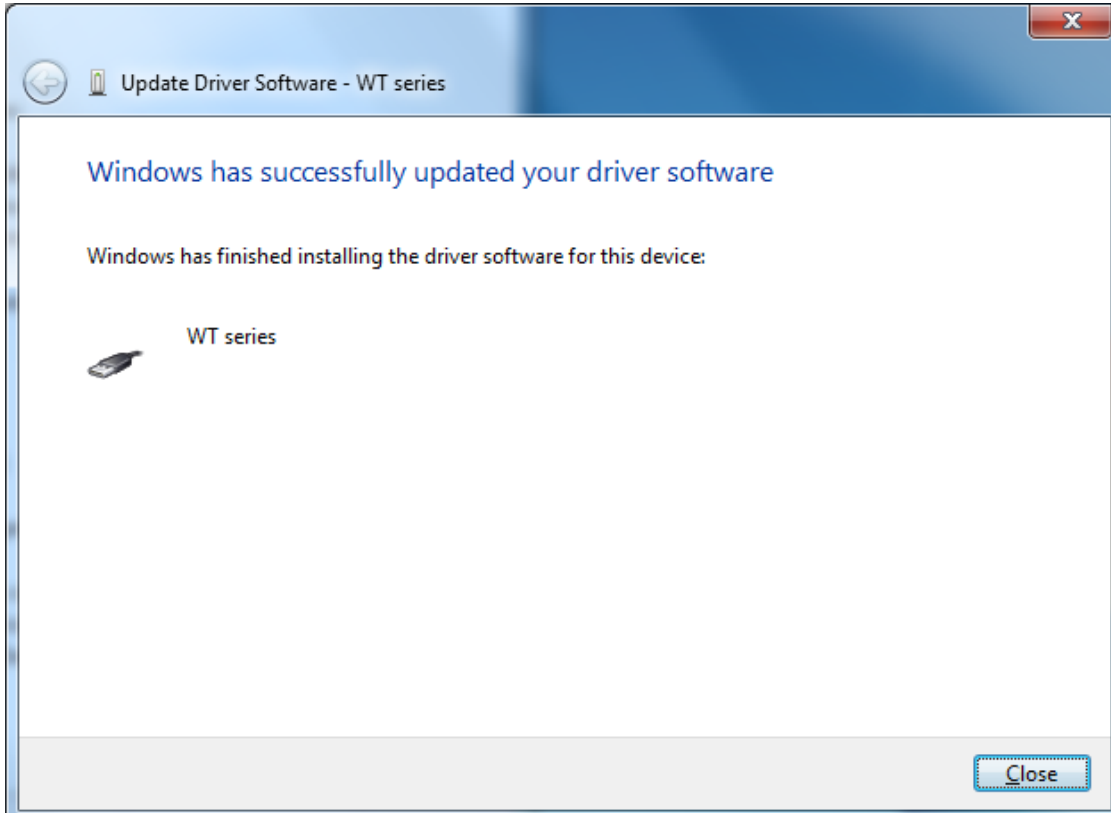


Select Wt series Version 1.0.0.0., if there is WT series Version1.0.0.0..

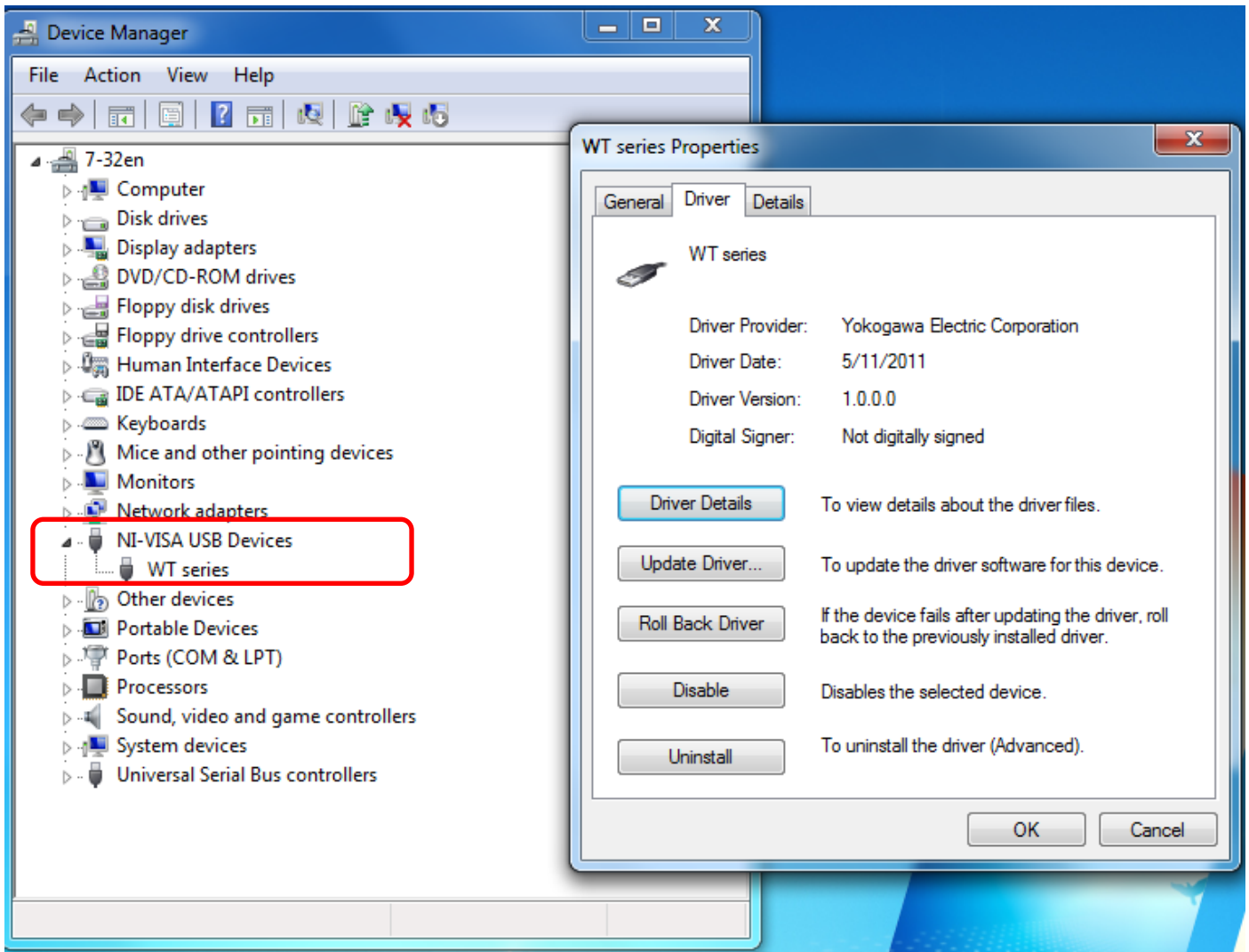
Do not select WT series Only.



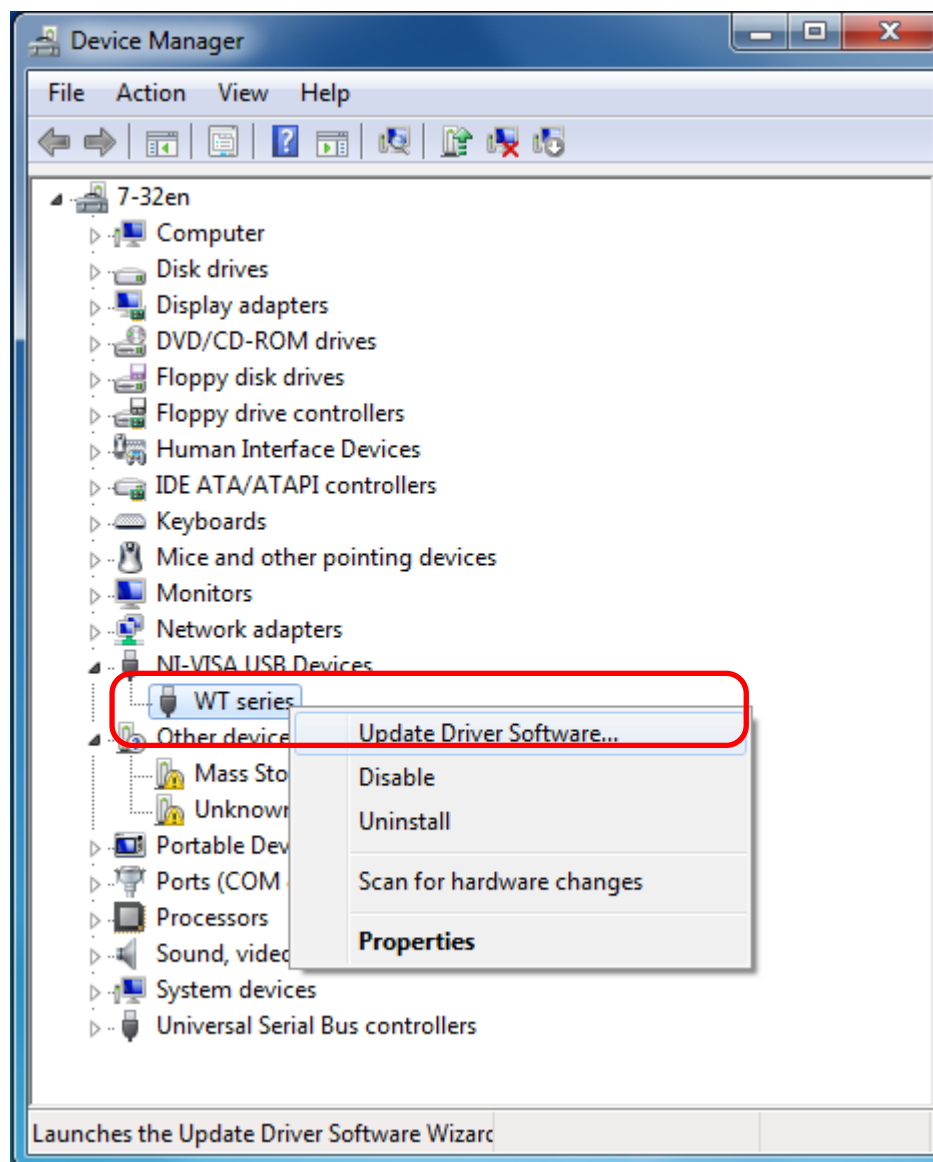
If the driver can be changed correctly, the below window will be shown.

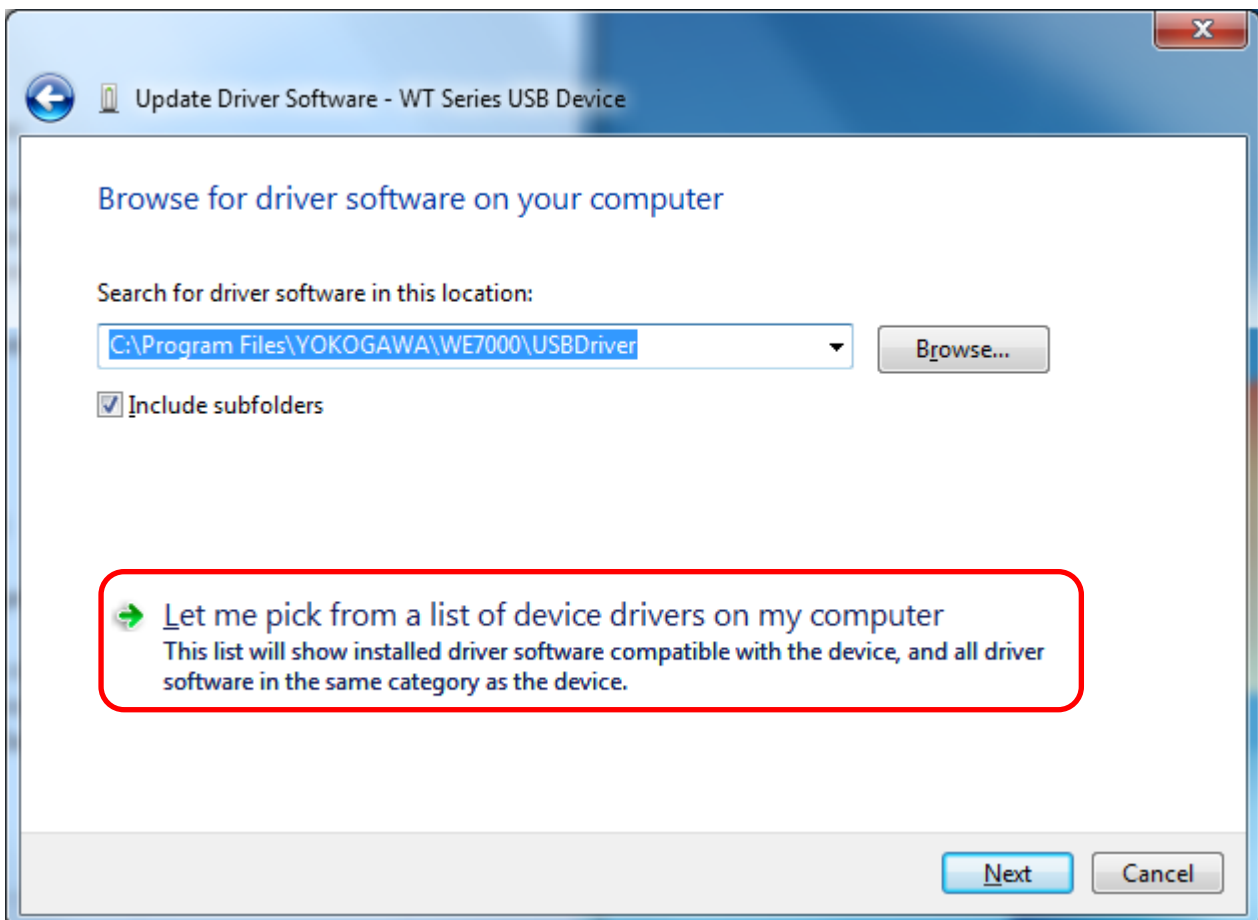
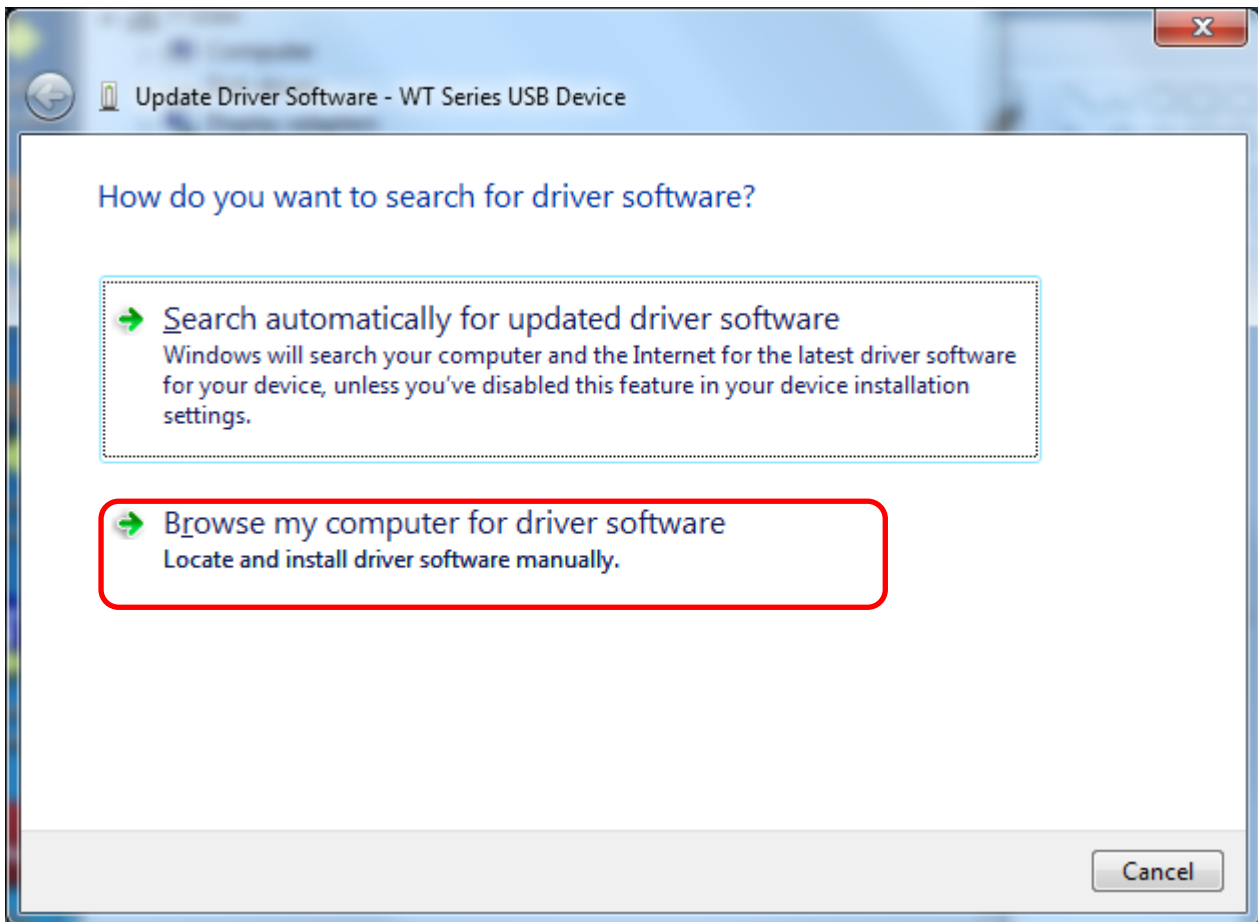


The Ni-VISA USB Device is shown in the Device Manager, and you can use LabVIEW in this mode.



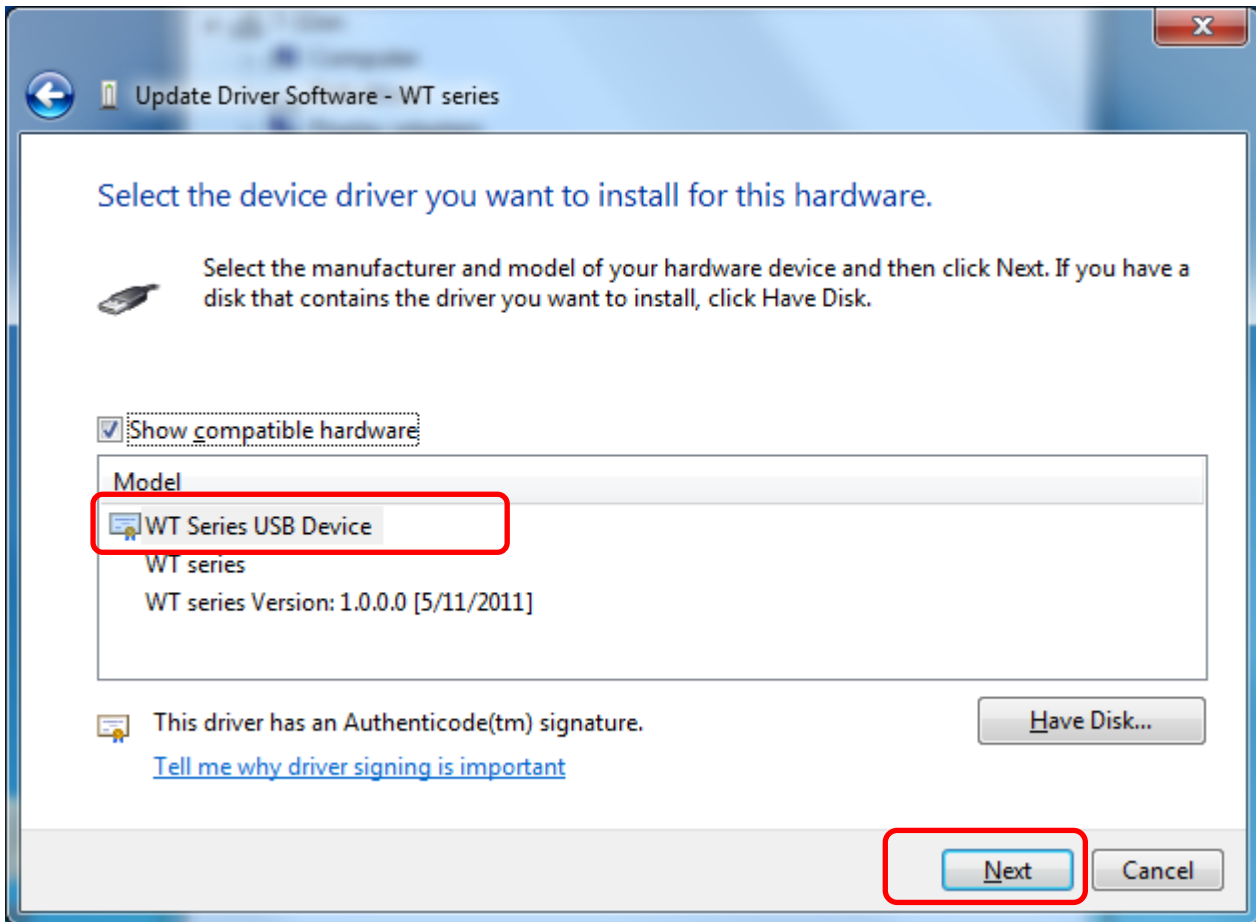
If you want to use WTviewer, you must change this NI-VISA USB Device.  
Please right-click on the WT Series, and select Update Driver Software...



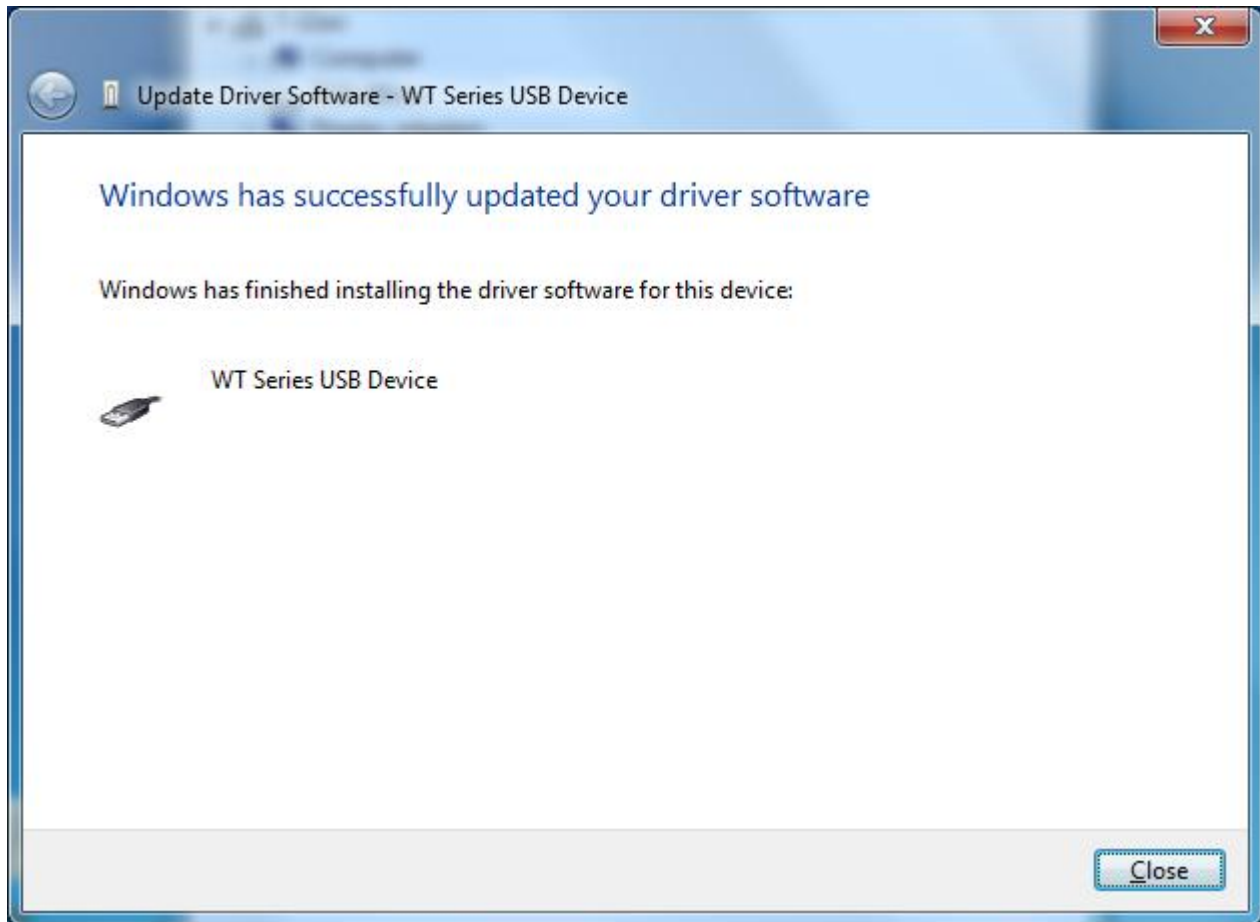


Select WT Series USB Device.

If you installed our YKMUSB Driver for WTviewer, WT Series USB Device is always shown in this window.



If the driver can be changed correctly, the below window will be shown.



The WT Series USB Device returns, and in this mode you can use WTviewer.

